

# Trauma Informed Attachment Aware Schools (TIAAS)

CITY OF  
WOLVERHAMPTON  
COUNCIL

Educational Psychology Service & Virtual School

## Are you struggling with an increase in:

- challenging behaviours and exclusions?
- attainment gaps and disengagement with learning?
- persistent absenteeism?
- concerns about pupil wellbeing?

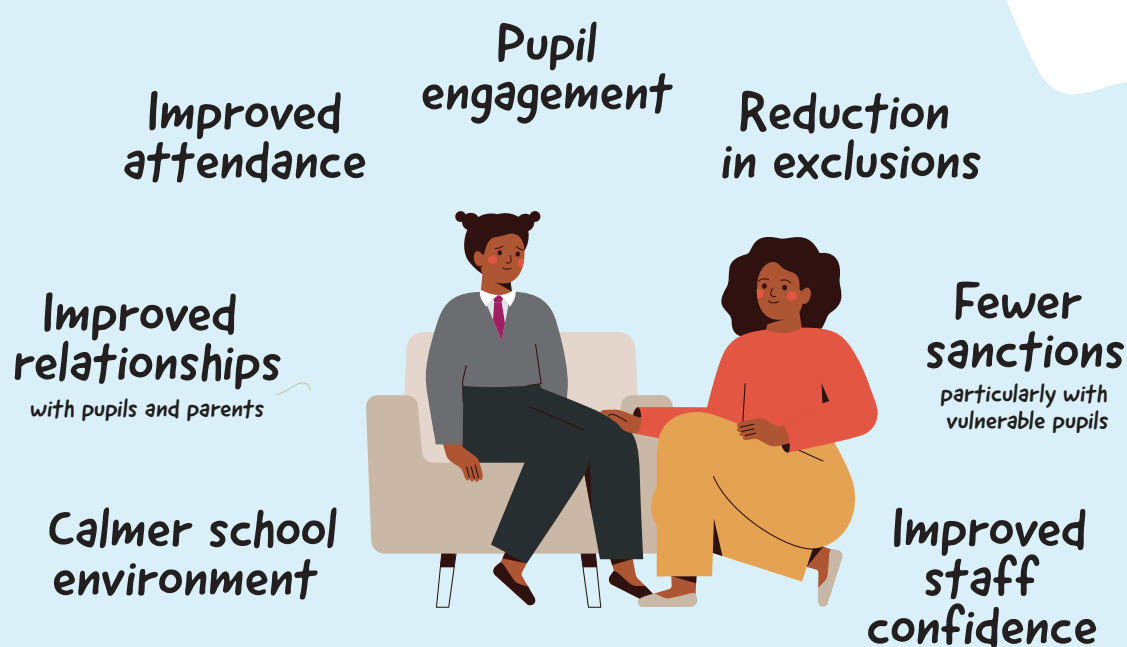
If so, the **Trauma Informed and Attachment Aware Schools (TIAAS) project** could help.

## What is a Trauma Informed School?

A school where:

- Practice, policies and procedures are guided by an understanding of the impact of trauma on a child's development and behaviour.
- Staff recognise signs of trauma and understand the impact this can have on a child's development and behaviour.
- Staff are confident in managing behaviour through building relationships and connections with pupils. Connection and relationships are prioritised.
- Children and young people feel safe and feel a sense of belonging and connectedness with the school community.
- There is an environment where students feel safe physically, psychologically, emotionally and socially.
- Curriculum supports students to understand and cope with trauma.

Benefits could be:



(Timpson Attachment and Trauma Awareness in School Project, 2021)

Approximately **1 in 3 children** have experienced trauma. Difficulties can include:



## What does the Wolverhampton TIAAS Project include?

- EP support and guidance, (cost to be partially subsidised by the LA and TBC for wave 2) to support your journey to becoming a trauma-informed, attachment aware school.
- Support to evaluate your current practice, strengths and areas for development.
- Collection and analysis of key information and data through an audit, staff surveys, parent and pupil focus groups and school 'trauma informed walk throughs'.
- Whole school Trauma Informed Training (delivered by AC Education).
- Facilitation of a Development Plan for your school for the next 12 months, reviewed together at termly intervals.

## Find out more about the TIAAS Project:

Contact Senior Educational Psychologist Dr Sarah Pryce  
e: [sarah.pryce@wolverhampton.gov.uk](mailto:sarah.pryce@wolverhampton.gov.uk)

Wolverhampton  
**VirtualSchool**